

- Automatic alarm sending in case of ALARM input (optoisolated) activation (SMS/GPRS)
- Automatic incoming call answering or call back
- Automatic call duration confirmation via GPRS
- Additional 7 optoisolated general purpose/diagnostic binary inputs/counters
- Serial communication port (RS-232) for monitoring or diagnostics of external devices
- GSM/GPRS packet transmission
- Integral GSM 900/1800 modem
- Removable terminal blocks
- DIN rail mounting



Specialized Elevator Alarm and Voice Communication module MT-501 is a dedicated, professional product which enables fulfillment of legal requirements of securing voice communication between an elevator cabin/passenger and maintenance personnel in case of an elevator alarm situation.

Due to the wireless nature of GSM/GPRS transmission, MT-501 module is an ideal solution in case of the lack of telecom cable connection or in case of demand for higher system reliability or alarm system cost optimization.

Compact design, integral GSM/GPRS modem, well defined functionality for easy interfacing with existing switches and standard intercom units enable easy implementation in new constructions and during existing elevators renovation.

Resources

- 1 dedicated, optoisolated, binary ALARM input with programmable activation dead time
- 7 optoisolated, binary inputs/counters
- AUDIO output for standard intercom connection
- RS-232 serial port for easy external devices monitoring or diagnostics - transparent transmission
- Flash memory for configuration data.
- Local or remote (via GPRS) configuration
- Real time clock (RTC)



Functionality

- Communication modes
 - GPRS - packet transmission
 - SMS
- Easy configurable, unsolicited alarm packet messaging to alarm handling center in case of ALARM input activation, binary input state change or time based
- Easy configurable, unsolicited SMS sending in case of ALARM input activation, binary input state change or time based
- Programmable inactivity time for ALARM input to avoid excessive alarming due to multiple, consecutive ALARM input activation
- Programmable filtration coefficient for binary inputs/counters
- Automatic answered voice call confirmation
- Transparent data transmission to/from devices connected to the module's serial port RS 232
- Local and remote (via GPRS) communication
- Configurable access security - IP and Tel # list, optional password for configuration
- User-friendly configuration environment
- Easy integration with service center software
- Status LEDs (module status, GSM communication activity, GPRS activity, serial communication activity, ALARM input and binary inputs status)
- Removable terminal blocks
- 9 - 30V DC power supply
- DIN rail mounting

General

Dimensions (length x width x height)	105x86x60 mm
Weight	300 g
Fixing	DIN Rail 35mm
Operating temperature	-20 ... +55°C
Protection class	IP40

GSM/GPRS Modem

Modem type	WISMO Quick
GSM	Dual Band GSM/GPRS module EGSM900/1800
Frequency range (EGSM 900 MHz)	Transmitter: from 880 MHz to 915 MHz Receiver: from 925 MHz to 960 MHz
Output power (EGSM 900 MHz)	33 dBm (2W) - Class 4
Frequency range (EGSM 1800 MHz)	Transmitter: from 1710 MHz to 1785 MHz Receiver: from 1805 MHz to 1880 MHz
Output power (EGSM 1800 MHz)	30 dBm (1W) - Class 1
Modulation	0,3 GMSK
Channel spacing	200 kHz
Antenna	50Ω

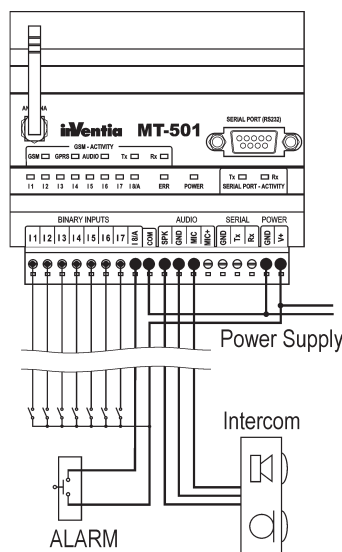
Power supply

DC (12V, 24V)	9 ... 30 V	
Input current (A) (for 12V DC, battery charged)	Idle 0,02	Max 0,50

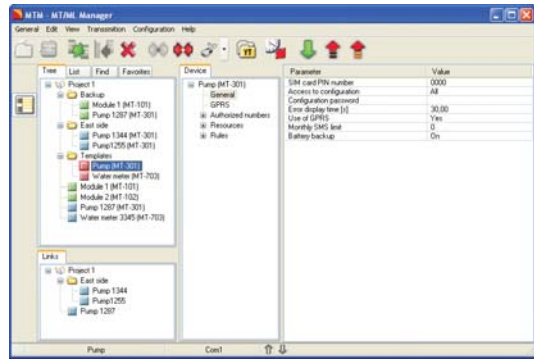
Inputs I1... ALARM / I8

Input voltage range	0 ... 30 V
Input resistance	5,4 kΩ
Input voltage ON (1)	> 9V
Input voltage OFF (0)	0 ... 3V

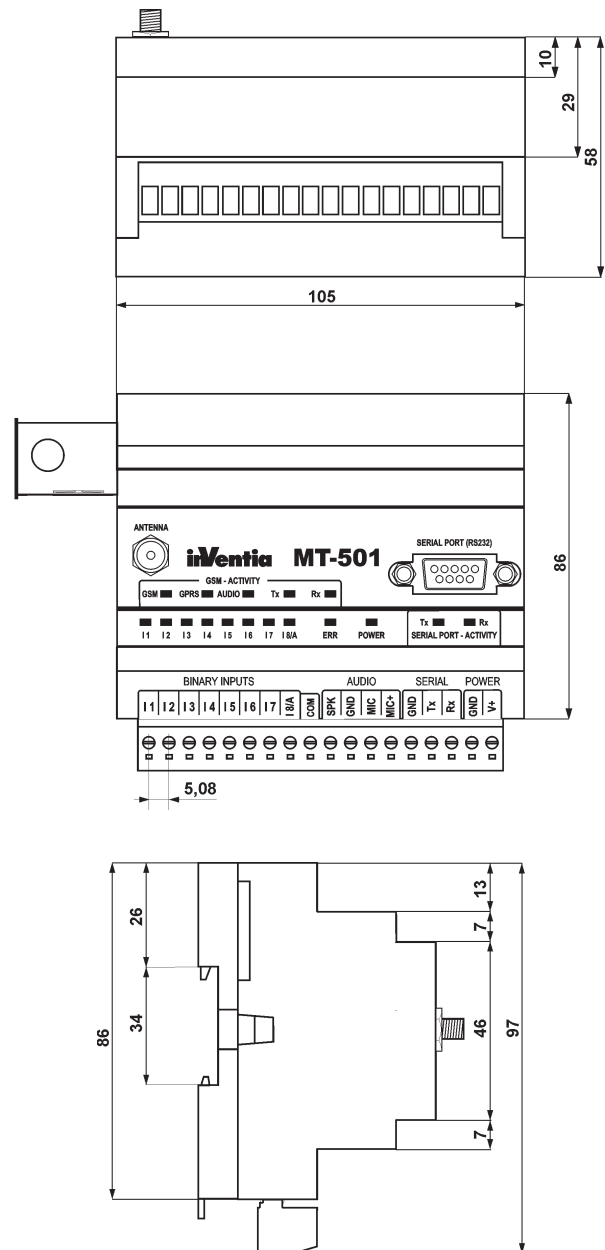
Application example



Configuration utility



Drawings and dimensions (in millimeters)



MT-501

AIRICOM Ile de France Paris et Nord
65 rue de la Libération - 60710 Chevières
tél 03.44.91.04.14 - fax 03.44.91.04.15
www.airicom.com - info@airicom.com

AURECOM Bretagne et Grand Ouest
La Ville Cognac - 56430 Maunon
tél 02.97.22.79.72 - fax 02.97.22.90.51
www.aurecom.fr - info@aurecom.fr

RG2I Rhône Alpes Est et Sud-est
26 rue Bergson - 42000 Saint Etienne
tél 04.77.92.03.56 - fax 04.77.92.03.57
www.rg2i.com - info@rg2i.fr

Votre interlocuteur

Groupe 2A7



INVENTIA complies with ISO 9001:2000 certified Quality Management System!
This project is co-financed by EUROPEAN UNION from the European Regional Development Fund resources.